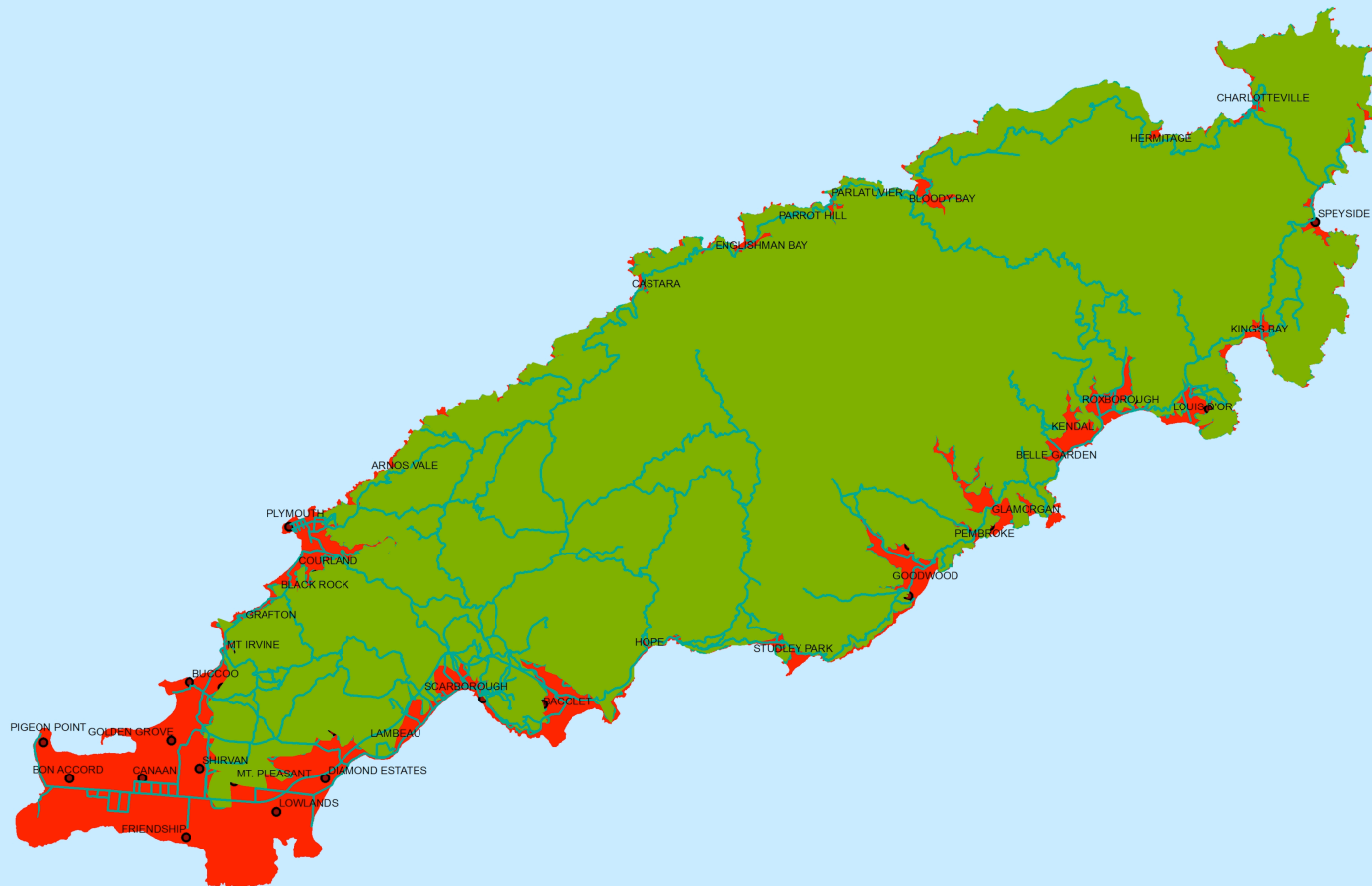


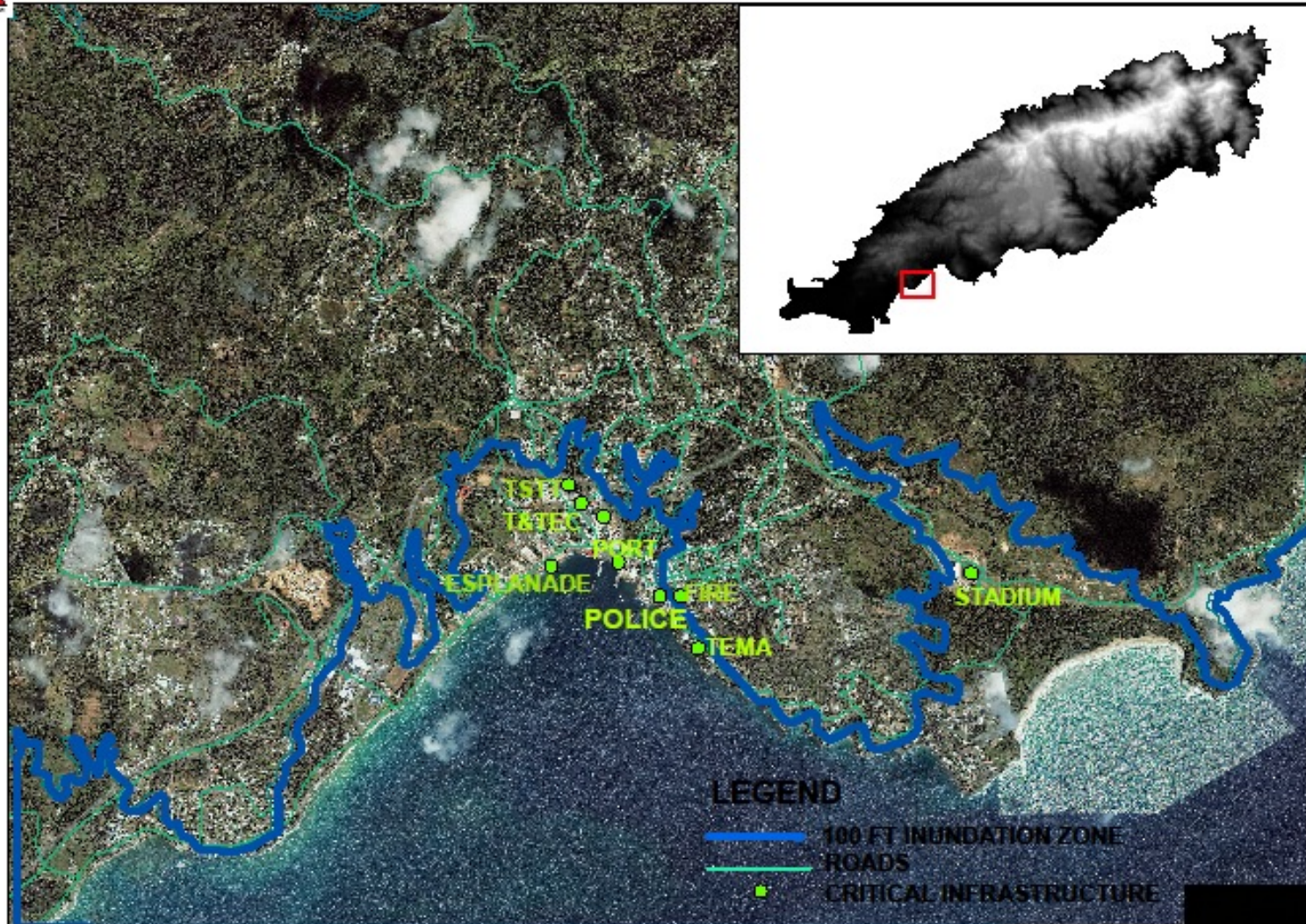


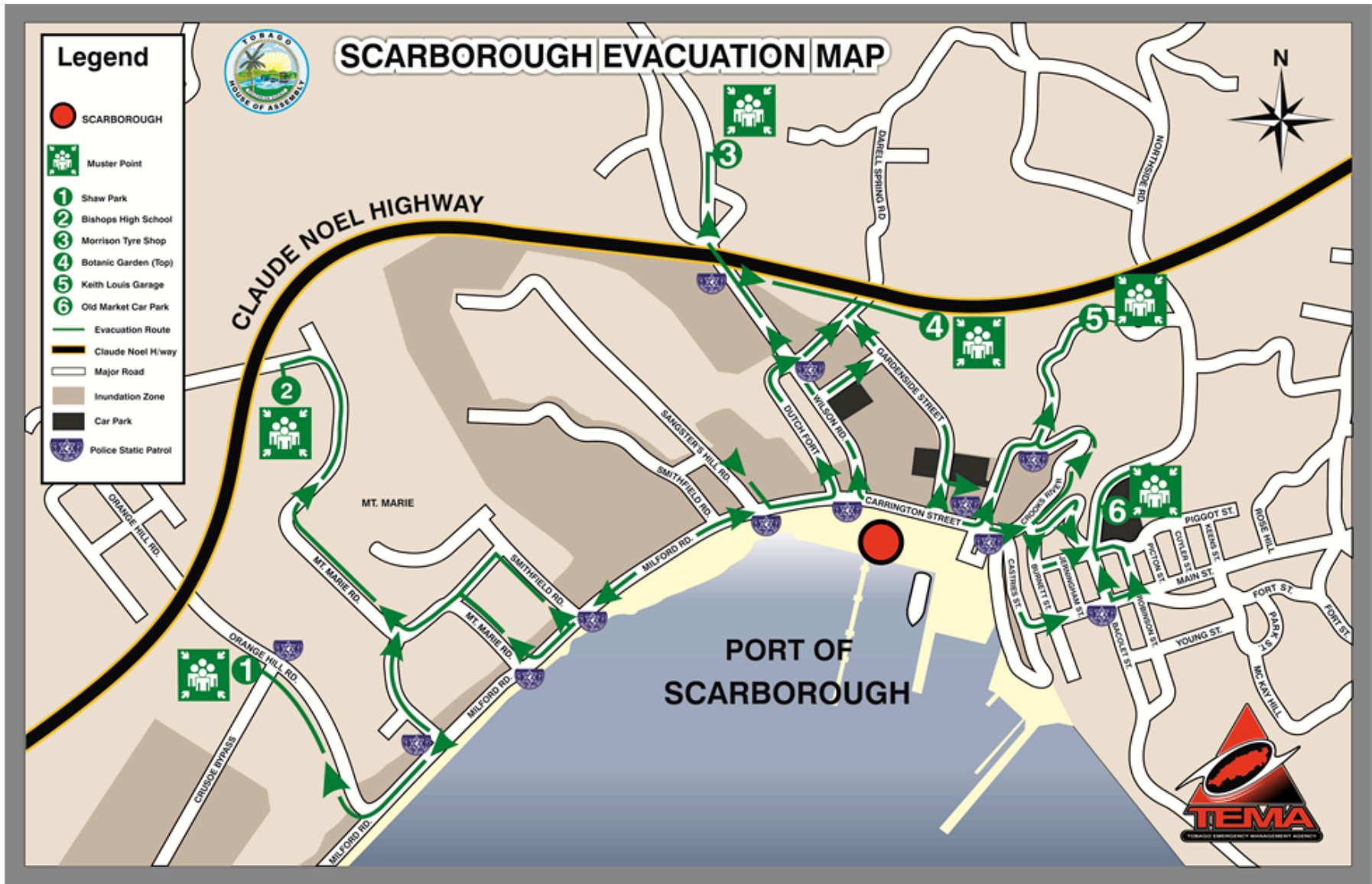
MAJOR COASTAL AREAS AFFECTED IN INUNDATION ZONE - TOBAGO

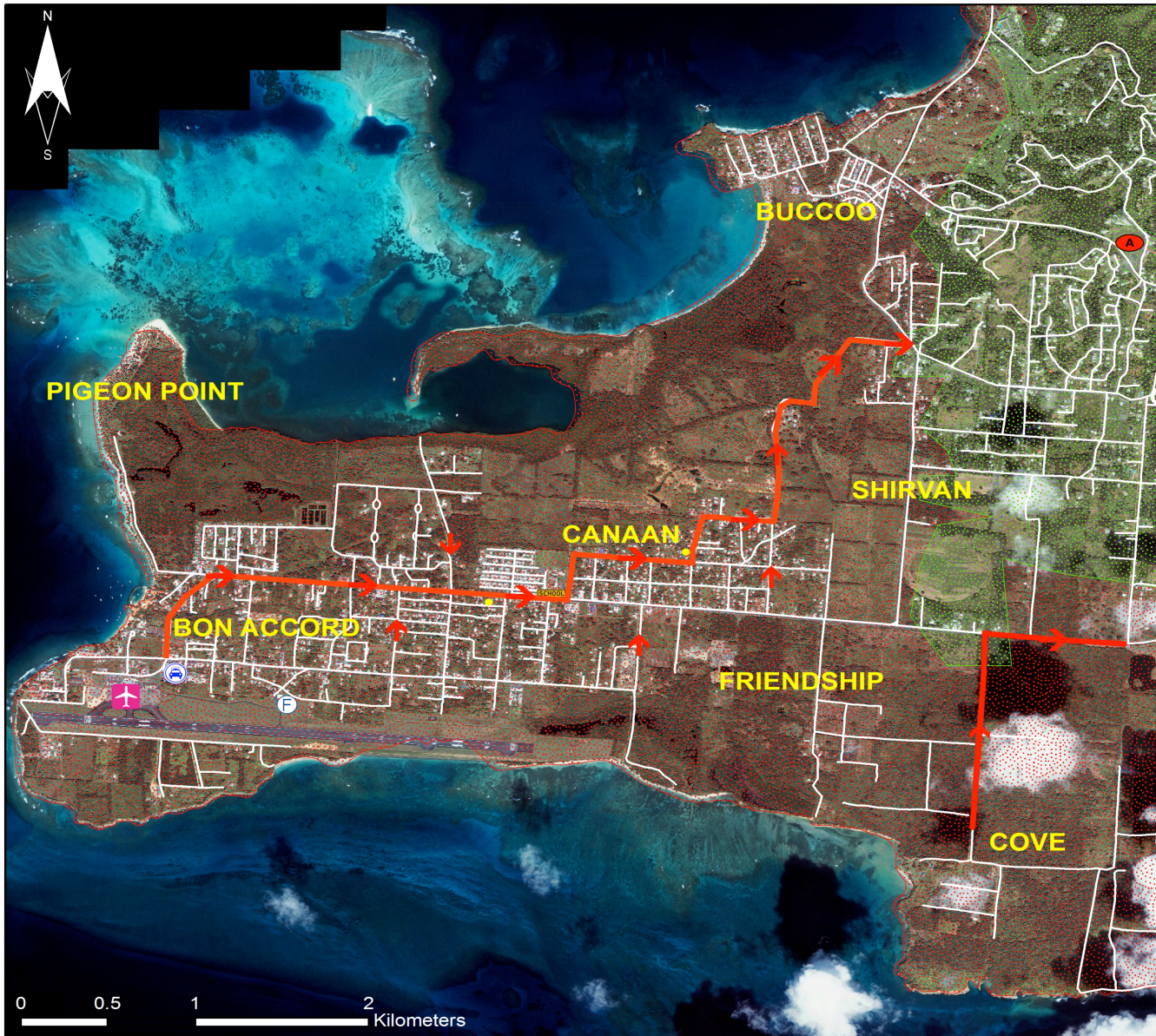




SCARBOROUGH, TOBAGO 100FT INUNDATION ZONE







**TOBAGO
TSUNAMI EVACUATION MAP
- SOUTH WEST -**

The Evacuation Zone and Routes on this map was developed by the Tobago Emergency Management Agency. It is intended to represent a worst case scenario for a tsunami extending to 100ft elevation inland, caused by an undersea earthquake near Trinidad and Tobago. This map is intended for emergency response and should not be used for site specific planning.

MAP SYMBOLS

- Evacuate from this area
- Outside Hazard Area
- Assembly Area (Montgomery Rec. Ground)
- Bon Accord Gov't Primary
- Crown Point Police Station
- Crown Point Fire Station
- ANR Robinson International Airport
- Early Warning Systems
- Evacuation Route

Projection/Datum: UTM/WGS84
Reference: SW Evacuation Map
Date: 19/3/2013

GIS Specialist
gis@tema365.net